



FASHIONS

PVT LTD



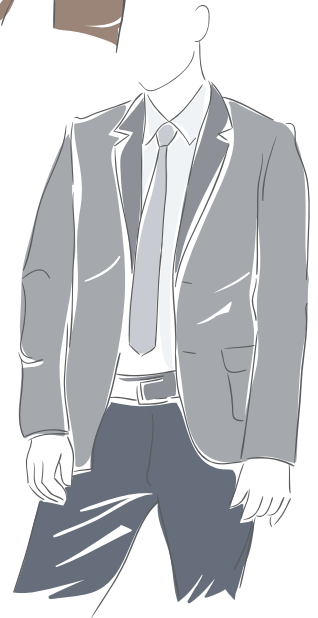
MEMBER OF BGMEA



[WWW.S2LFASHION.COM](http://WWW.S2LFASHION.COM)

## WHO WE ARE?

S2L Fashions Pvt. Ltd. (SFPL) started its journey in Bangladesh in the year of 2012 with the initiate of Mr. Lalindra Yahatugoda holding a position as Chairman & Mr. Shohagh Ahmed as Managing Director. Today SFPL has become one of the leading and pioneer safety garments and work wear manufacturing company in Bangladesh. Apart from that SFPL also specialized in outer wear and Bottoms manufacturing and catering to some of the world's leading brands. SFPL has started its operation in Bangladesh with small size factory at Gazipur with the monthly capacity of 1,10,000 Pcs of Non Woven Coverall with Hood (Safety & Work Wear Garments) with 17,000 SFT. But as time passes by SFPL has enlarge its business size upto 60,000 SFT with the monthly capacity of 3,00,000 Pcs of safety garments and 1,70,000 Pcs of pant (Trousers, Jens, Shorts etc) 80,000 Pcs of Shirt. SFPL also contributes to the country's economy by providing employment for more than 1000 peoples.





We have come all the way more than two years with confidence and pride of being about to meet our valued customers' requirements by producing top quality garments in a pleasant environment and meeting timely delivery. Management of the company is very much aware of the fact that today's garments business in the international market is a place where law of perfect competition operators to its maximum. Keeping in mind the above fact SFPL is very much focused on producing top quality garments in fully compliant environment and meeting timely delivery more than ever before. We at SFPL from top management to workers are committed to surpass customers 'expectation whatever we do. The management is strictly cautious about the essence of being proactive, positive thinking and being quick to response to customer's needs. Further we are very much aware in today's business world communication plays a vital role that never before and secret of our success mostly depends on our proper and efficient communication system.



S2L FASHIONS PVT. LTD.

Considering today's globalization of garments business, good governance plus social and security compliance has become the order to the day for the art of survival of the business. Keeping in view the necessity of this, management has invested more on this in the recent past and has decided to implement paradigm shift to our way of thinking and our working plan to meet and maintain international requirement on compliances. SFPL is committed to continual learning and development and invests highly in its people to stay tuned to evolving industry trends. We have consistently placed an emphasis on quality and this dedication to superior service and product has led to a portfolio of high profile clients and business partners.

Our factory is situated in Gazipur district adjacent to capital city of Bangladesh. Since we are only a 40 minutes driven away from the capital city Dhaka. It is very much convenient for us to clear our import and ship our export as it's connected with the high way (by pass) to Chittagong port which is an added advantage over other factories.



[WWW.S2LFASHION.COM](http://WWW.S2LFASHION.COM)



Company Name:  
S2L Fashions Pvt. Ltd

Legal Status: 100% Local  
investment garments  
manufacturing company

Name of Owner:  
Mr. Lalindra Yahatugoda  
Mr. Shohagh Ahmed

Established:  
2012

Corporate Website:  
[www.s2lfashion.com](http://www.s2lfashion.com)

## COMPANY INFORMATION

Nature of Business:  
Garments manufacturing and exporting mainly to  
Europe, USA, UK, Australia, Japan, Turkey.

Sister Concern:  
01. Mirage Textile Pvt. Ltd. - 02. Trims Manufacturing Ltd.

Main Office:  
House # 482, Road # 08, Baridhara  
DOHS, Dhaka, Bangladesh.

Factory Address:  
Sharifpur (Malaker Bari) Gazipur Sador, Gazipur-1704, Bangladesh

Contact Person:  
Mr. Ferdous Mia - Director  
Mr. Chaminda - Director

Contact Person:  
Mr. Lalindra Yahatugoda - Chairman  
Mr. Shohagh Ahmed - Managing Director

Email Contact:  
[lalindra@miragetextile.net](mailto:lalindra@miragetextile.net) - [shohagh@miragetextile.net](mailto:shohagh@miragetextile.net)  
[ferdous@s2lfashion.com](mailto:ferdous@s2lfashion.com) - [chaminda@s2lfashion.com](mailto:chaminda@s2lfashion.com)

Bankers:  
Social Islami Bank Limited, Gulshan Branch, Dhaka  
Shahjalal Islami Bank Limited, Gulshan Branch, Dhaka

Our mission is to become a leading garments manufacturer in Bangladesh in every aspect of its business and in delivering its obligations as a good corporate citizen to its customers, employees, owners, public and to the environment.

## MISSION

## VISION

Our Vision is to mature in to a highly reputed manufacture of garments in the international market by producing to quality products which conform and surpass the customer expectation.



We believe that our customers must stand at the center of all our activities.

## BELIEFS

## FOCUS

We focus on production of top quality garments in a fully compliant environment meeting timely delivery.

To confirm and surpass the customer expectation, improve productivity, minimize rejection rate, development of employees to meet future challenges and continual improvement.

## OBJECTIVES



S2L FASHIONS PVT. LTD.

## OUR BUYERS



McDonalds



Nobina



Microgard



7-Eleven



ICA Maxi



Lefdal



Systembolaget



apoteket

Apoteket

TOP GRADE

Top Grade



Keolis



SAS



Elkjop

**TED BERNHARDTZ  
at work**

Ted Bernhardtz at work



**Orchestra**

*"We help growing industries run better."*

Orchestra



**Reitangruppen**

Reitan



**MTR 港鐵**

MTR



### Our Products

We specialize in safety garments as well as outer wear, active wear, casual wear, bottoms, dress & casual pants and wrinkle free shirts.

### Our Technology

The SFPL has well equipped factories with the latest machinery to produce quality garments. Our commitment to constantly upgrading our infrastructure and resources is evident from our impressive array of state of the art machinery.

### Our Inspection Machines

Fabric Inspection Machine

Pull Test Machine.

Fabric Testing Machine

Fusing Machines.

Seam Seal Tape Testing Machine



### Our Environment

Our commitment to our clients begins with our employees. Our employees are our strongest asset and we ensure that the working environment at our facilities is safe, comfortable and productive.





### Our Quality System

We follow an acceptable quality level (AQL) of 2.5 to 4, depending on the client's requirements. The SFPL conducts inspections at all stages of the production process, including:

#### Fabric Inspection:

All the material are laboratory tested before shipment. We also conduct random inspection based on 4 point system/10 point system.



#### Accessories Inspection:

Accessories used by us are imported from various countries around the globe and randomly checked.

#### Cutting Room:

Random inspection based on required AQL. We also number the garments parts to avoid color shading.

#### Sewing Room:

100% inspection on each garment.





# S2L FASHIONS PVT. LTD.



ISO 9001:2008  
certified company



PPE Article 11 (B)  
certified from SGS

BSCI & SEDEX



ACCORD



# FACTORY INFORMATION

Years of Starting Operation  
2012

Capacity (Pcs per Month)  
Non Woven-3,00,000 Pcs Woven-2,50,000 Pcs

Turnover  
Annual turnover USD 50.00 Million

Lead Time  
60-90 Days from Order Confirmation

Current Export Markets  
Europe, USA, UK, Australia, Asia & Middle East.

Terms of Sale  
FOB/CIF Confirmed and irrevocable letter of Credit NFE

Sampling Capacity  
47 Machines & Operators equipped with all kind of special machines capacity 25-30Pcs per day. Sample lead time 48 hours.

Number of Sewing Lines  
Nonwoven-4 Woven-10

Cutting Tables  
66Ft X 7.5 FT (3 Nos)

Number of Sewing Machine  
750

Total Number of Employees  
Total Number of Employees 1000.

Toilets  
56

Fire Extinguisher  
110



 S2L FASHIONS PVT. LTD.

Fire Safety  
Fire hose system, Underground reserve, overhead tank & Addressable fire detection system

# FACTORY AREA DETAIL IN SQUARE FEET (SQUARE FEET)

Office	3,200
Sewing	21,150
Cutting	3,550
Finishing/Packing	7,300
Store	20,500
Pressing & Oven	1,000
Dining, canteen & Others	3,400
<b>Total Factory Premises in (Square Feet)</b>	<b>60,000</b>



## MACHINERY LIST

SL No.	Machine Type	Brand	Model No.	Country of Origin	Quantity	
01	Bartaking	Juki	Heavy Auto	Japan	006	sets
02	Bartaking	Juki	Light Auto	Japan	001	sets
03	Blind Stitch	Tony	H-101-M	China	001	set
04	Lockstitch Button Hole	Mitsubishi/Juki	LBH781U	Thailand	001	set
05	Lockstitch Button Hole	Juki	LBH1790S/MC601KSS	Japan	002	set
06	Lockstitch Button attacher	Mitsubishi/Juki	LK1903ANSS301/MC598KSS	Japan	001	set
07	Lockstitch Button attacher	Juki	LK1903ANSS301/MC598KSS	Japan	002	sets
08	Cloth Cutting	Juki	K.M KS. AU-V-10"	Japan	001	set
09	Cloth Cutting	Juki	K.M. KS. AU-V-8"	Japan	001	set
10	Cloth Cutting	KANSAI	K.M.KS.AU-V-10"	Japan	001	set
11	Double Needle, Lockstitch	Juki	Heavy Manual	China	009	sets
12	Double Needle-Lockstitch	Juki	Light Manual	China	002	sets
13	Double Needle-Lockstitch	Yamata	Heavy	China	004	sets
14	Automatic Sleeve Setting	Juki	DP-2100SZ	Japan	001	set
15	End Cutter Machine	Juki	EC-3	China	001	set
16	Eyelet Button Hole	Juki	MEB3200JSKA	Japan	001	set
17	Eyelet Button Hole	Juki	MEB3200SSKA	Japan	001	set
18	Feed off the Arm	Juki	Heavy Manual	Japan	003	sets
19	Feed off the Arm	Juki	Heavy Manual	Japan	003	sets
20	Flat Lock	Juki	MF7523U11B56	China	001	set
21	Flat Lock	Siruba	L383-64	China	001	set
22	Flat Lock	Juki	MF7523U11B56	China	001	set
23	Flat Lock	Juki	MF7523C11B56	China	001	set



24	<b>Flat Lock</b>	<b>Juki</b>	<b>MF7823U10B56</b>	<b>China</b>	<b>001</b>	<b>set</b>
25	Flat Lock	SIRUBA	L381-64	China	001	set
26	Flat Lock	SIRUBA	L383-64	China	001	set
27	Fusing Press	HASHIMA	HP-900LFS	China	001	set
28	Fusing Press M/C (Continuous Compact and Steam Generator Connection for 2 Iron)	VEIT	AX 450, Cases packing	Germany	001	set
29	Iron M/c Special	VEIT	VEIT Varioline CR 2	Germany	001	set
30	Multi Needle chain stitch	Siruba	VC008-04085P/VWL	China	002	sets
31	Multi Needle chain stitch	Siruba	VC008-0464-191p/VSF	China	003	sets
32	Multi Needle chain stitch	KANSAI	DFB-1404PMD	Japan	001	set
33	Multi Needle chain stitch	KANSAI	DFB-1404PSF	Japan	001	set
34	Over Lock- 5 Thread	Juki	Light Manual	China	022	sets
35	Over Lock- 3 Thread	Juki	Light Manual	China	036	sets
36	Over Lock- 4 Thread	Juki	Light Manual	China	042	sets
37	Hot air seam sealing Machine	VEM-V-6	Heavy	China	007	sets
38	Pinpoing Saddle Stitching	Juki	MP200NL	Japan	001	set
39	Single Needle lock stitch with automatic thread trimmer	Juki	Heavy Auto	China	082	sets
40	Single Needle lock stitch with automatic thread trimmer	Juki	Light Auto	China	060	sets
41	<b>Single Needle Lock stitch</b>	<b>Juki</b>	<b>Light Manual</b>	<b>China</b>	<b>030</b>	<b>sets</b>
42	Single Needle Lock stitch	Juki		China	003	sets
43	Shape Button	Juki	LK1930HS5045Z/MC5935KF	Japan	001	set
44	Velcro Attach- Automatic	Juki	LK1930HS5045Z/MC5935KF	Japan	002	sets
45	Snap Button	UZU	UZ-7EN	Thailand	001	set
46	Snap Button	UZU	UZ-7EA	Thailand	002	sets
47	Steam Iron	VEIT	AS-1450	South Korea	012	sets
48	Thread Re-Coning	HASHIMA	HW-20C	China	001	set
49	Thread Suction	UZU	UZ-12A	Thailand	001	set
50	Vacuum Table	Juki	COOLSET-CST-ST	China	001	set
51	Vacuum Table	COOLSET	COOLSET-CST-ST-B1	China	012	sets
52	Zickzak Machine- Lockstitch	Juki	LZ2284A	China	001	set
53	Boiler Machine- 150 Kg/HR Verticl Fired Tubless Steam Gas Boiler	Golden Boiler Co. Ltd.	GBCL- 150 TL	Italy/Korean	001	set
54	Compressor	Fini	Fine-5Hz	Italy	001	set
55	Generator	Volvo	330KVA	Sweden	001	set
56	Bartaking	Juki	Light Auto	Japan	001	sets
<b>TOTAL</b>					<b>378</b>	<b>sets</b>

# MACHINERY LIST

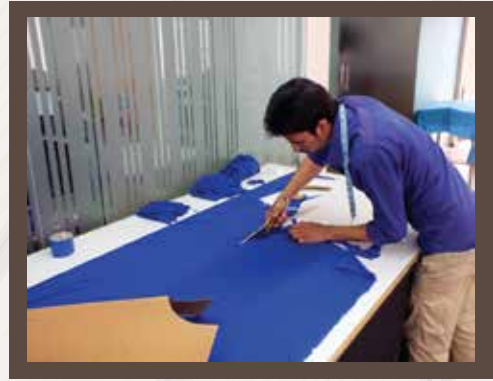
NEW MACHINES					
SL No.	Machine Type	Brand	Model No.	Quantity	
01	OVER LOCK	JUKI	MO6716SDE440HE35-A	005	sets
02	BLIND STITCH	TONY	H-101-M	001	
03	Multi Needle chain stitch		DFB-1404PMD	003	sets
04	KANSAI SPECIAL		B-2000C	001	set
05	Single Needle lock stitch with automatic thread trimmer	JUKI	DDL900ASWBIC	225	sets
06	VELCRO ATTACH	JUKI	AMS210ENHL1306SZ5000C/MC587K	004	sets
07	BARTACK	JUKI	LK1900BSS/MC670KSS	006	sets
08	Double Needle lockstitch	JUKI	LH3528ASF00SA	033	sets
09	Double Needle lockstitch	JUKI	DLM5200ND-A	012	sets
10	P/M MACHINE	JUKI	DDL-8700	016	sets
11	Lockstitch Button attacher	JUKI	LK1903BSS301/MC5670KSS	003	sets
12	Double Needle Chainstitch	JUKI	MH380FU-AC	006	sets
13	Lockstitch BUTTON HOLE	JUKI	LBH1790AS/MC602KSS	005	sets
14	Thread Needle Chainstitch cylinder arm	JUKI	DSC-245U	001	set
15	F.O.ARM (HEAVY)	JUKI	MS1261MF/VO45S-AA	001	
16	F.O.ARM (NORMAL)	JUKI	MS1190F-AA	006	sets
17	CUFF TURNING MACHINE	NGAI SHING	NS-46	001	set
18	VELCRO CUTTING	CUTEX	TBC-50	001	set
19	EYE BUTTON HOLE	JUKI	MEB3200SSKA	001	set
20	OVER LOCK	JUKI	MO6743S1D640H-A	030	sets
21	SNAP BTTN	UZU	UZ-7EA	006	sets
22	COLLAR TURING & BLOCKING MACHINE	NGAI SHING	NS-44	001	set
23	GENERATOR	KNIT SOFTWARE LTD.	TAD 941 GE	001	set
24	350 KG TUBELEES STEAM GAS BOILER	FRIENDS BOILER CO.	GBCL/VT35003	001	set
<b>TOTAL</b>				372	sets
<b>GRAND TOTAL</b>				750	sets

# S2L FASHIONS GALLERY





# S2L FASHIONS GALLERY





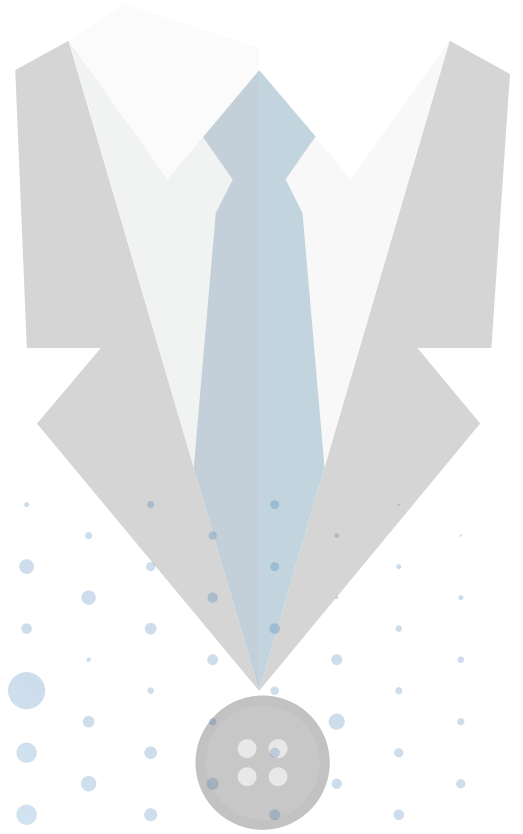
# S2L FASHIONS GALLERY





# S2L FASHIONS GALLERY





Sharifpur (Maleker Bari) Gazipur Sador  
Gazipur-1704, Bangladesh



chaminda@s2lfashion.com  
ferdous@s2lfashion.com



lalindra@miragetextile.net  
shohagh@miragetextile.net